

## Sculpt Tile

Product Type	<b>Carpet Tile</b>
Collection	<b>Rewoven</b>
Style Number	<b>5T007</b>
Construction	<b>Multi-Level Pattern Cut/Loop</b>
Fiber	<b>Ecosolution Q100™ Nylon</b>
Dye Method	<b>100% Solution Dyed</b>
Primary Backing	<b>Synthetic</b>
Secondary Backing	<b>Ecworx® Tile</b>
Protective Treatments	<b>SSP® Shaw Soil Protection</b>
Recommended Adhesive	<b>LokWorx+ Carpet Tile Adhesive 4 gallon, LokWorx+ Carpet Tile Adhesive 1 gallon, LokWorx+ Multi-Use Adhesive, LokDots, LokWorx Adhesive Tabs, Shaw 3800 or LokWorx Carpet Tile Adhesive</b>



	u.s.	metric
Product Size	<b>24 in x 24 in</b>	<b>61 cm x 61 cm</b>
Area per Carton	<b>48 ft<sup>2</sup></b>	<b>4.46 m<sup>2</sup></b>
Pieces per Carton	<b>12 pcs</b>	
Gauge	<b>1/10 in</b>	<b>39.4 per 10 cm</b>
Stitches	<b>13.0 per in</b>	<b>51.0 per 10 cm</b>
Finished Pile Thickness	<b>0.129 in</b>	<b>3.28 mm</b>
Average Density	<b>5581 oz/yd<sup>3</sup></b>	<b>0.206 g/cm<sup>3</sup></b>
Kilotex		<b>11.84</b>
Total Thickness	<b>0.249 in</b>	<b>6.32 mm</b>
Tufted Weight	<b>20 oz/yd<sup>2</sup></b>	<b>678.1 g/m<sup>2</sup></b>

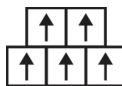
### Recommended Installation Method



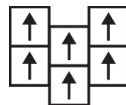
**Monolithic**



**Quarter Turn**



**Brick**



**Ashlar**

### Performance + Testing

Radiant Panel	<b>Class I</b>
NBS Smoke	<b>Less Than 450</b>
Electrostatic Propensity	<b>Less Than 3.5 kv</b>
CRI Green Label Plus (GLP)	<b>CRI Green Label Plus (GLP)   GLP9968</b>
Pill Test	<b>Pass*</b>
ADA Compliance	<b>&gt;0.6, meets the recommended static coefficient of friction for ADA walking surfaces and accessible routes***</b>

Test Reports may be included or listed by the manufacturing/inventory style number as opposed to the noted selling style number.

### Warranties

[Lifetime Commercial Limited Warranty](#)

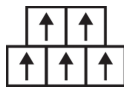
## Recommended Installation Method



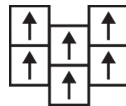
**Monolithic**



**Quarter Turn**



**Brick**



**Ashlar**

## Coordinating Products

Carpet Tile: **Trace Tile, Align Tile, Sculpt Loop Tile**

Broadloom: **Layer, Dimension, Contour, Outline**

## Diversity, Equity & Inclusion

We believe all humans are equal. Individually and collectively, we need to proactively create and promote opportunities that give everybody an equal footing in life. We nurture an environment where every voice and perspective can be heard, and proactively promote accessibility and inclusivity inside our network and beyond. One proof point is our ability to meet the criteria of the Social Fairness pillar of the Cradle to Cradle Product Standard. At Shaw Industries, we promote supplier participation that is reflective of Shaw's diverse customer base and local community. More than 42% of our spend\*\*\*\* is with small and diverse businesses. We believe having a strong Supplier Diversity Program is strategic for bringing more innovation to our businesses and opening new markets for growth.

## Material Health & Environmental Certifications

Certifications below apply exclusively to the carpet tile rug itself and not the LokWorx Tabs adhesive

### Health & Wellbeing

Material Ingredient Transparency

**Cradle to Cradle Certified® | Silver Level (Version 4.0)**  
**Health Product Declaration (HPD) | 1,000 ppm Disclosure**  
**Living Building Challenge (LBC) | Free of Red List Chemicals**  
**Declare | LBC Compliant**  
**NSF 140 | Gold**

Indoor Air Quality

**CRI Green Label Plus (GLP) | GLP9968**

### Climate Impact

Environmental Product Declaration (EPD)

**3rd Party Certified in Accordance with ISO 14044, ISO 14025 & EN15804**

Embodied Carbon (Cradle to Gate)

**4.73 kg CO<sub>2</sub>/m<sup>2</sup>**

Life-Cycle Carbon Emissions

**Carbon Neutral**

Total Recycled Content

**60% (Pre-Consumer 60% | Post-Consumer 0%)**

Product Packaging

**100% Recyclable**

### Global Product Assessment

**Building Research Establishment (BRE) | Certified**

**Singapore Green Label | Certified**

**GSA | Approved**

**CE Marking (EN 14041) | 3rd Party Certified**

**Environmental Guarantee\* | Re[turn] Reclamation Program\* | Through Our Environmental Guarantee, Shaw Pledges to Transport And Recycle Any Ecoworx Carpet Within The United States And Canada At No Cost to The Customer.**

**Country of Origin\*\* | USA**

## WELL V2 Contribution Credit

X08 Hazardous Material Reduction  
Part 1: Limit Hazardous Materials Optimization

**C2C Silver Level (Version 4.0)**

X10 Volatile Compound Reduction  
Part 1 (A): Manage Volatile Organic Compounds (VOCs) Optimization

**C2C Silver Level (Version 4.0)**

X11 Long Term Emissions Control  
Part 2: Flooring Optimization

**Green Label Plus Certification: GLP9968**

X13 Enhanced Material Precaution  
Part 1: Select Optimized Materials Optimization

**C2C Silver Level (Version 4.0)**

X14 Material Transparency  
Part 1: Promote Ingredient Disclosure Optimization

**C2C Silver Level (Version 4.0)**

## Leed v4 Contribution Credits

MR Credit: Building Product Disclosure and Optimization  
Environmental Product Declarations - Option 1: Environmental Product Declaration (EPD)

**3rd Party Certified in Accordance with ISO14044, ISO14025 & EN15804**

MR Credit: Building Product Disclosure and Optimization  
Material Ingredients - Option 1: Material Ingredient Reporting

**C2C Silver Level (Version 4.0)**

MR Credit: Building Product Disclosure and Optimization  
Material Ingredients - Option 2: Material Ingredient Optimization

**3rd Party Certified in Accordance with ISO14044, ISO14025 & EN15804**

MR Credit: Building Product Disclosure and Optimization  
Sourcing of Raw Materials - Option 2: Leadership Extraction Practices

**Environmental Guarantee: Re[turn] Reclamation Program\* | Through Our Environmental Guarantee, Shaw Pledges to Transport And Recycle Any Ecoworx Carpet Within The United States And Canada At No Cost to The Customer.**

EQ Credit: Low Emitting Materials  
Option 1: Product Category Calculations

**Green Label Plus Certification: GLP9968**

MR Credit: Interiors Life-Cycle Impact Reduction  
Option 3: Design for Flexibility

**Ecoworx Tile with Lokdots Installation System**

## Light Reflectance Value



LRV 17.7  
Bisque 83111



LRV 19.5  
Cork 83170



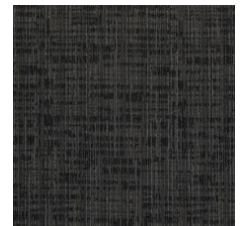
LRV 6.7  
Nuance 83314



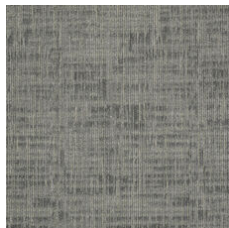
LRV 8.3  
Swept 83322



LRV 3.0  
Night 83496



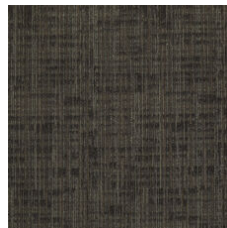
LRV 3.7  
Underground 83505



LRV 14.4  
Zinc 83515



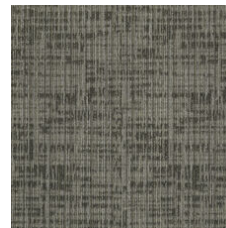
LRV 6.0  
Carbon 83585



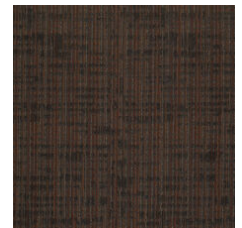
LRV 4.5  
Canyon 83750



LRV 12.3  
Suede 83755



LRV 10.6  
Clay 83761



LRV 3.8  
Brazen 83803

## Additional Information

---

\* To learn more about the recyclability of our products and our re[TURN], please visit [shawcontract.com/sustainability](http://shawcontract.com/sustainability).

\*\*Meets or exceeds all local and national regulations in country of manufacture.

\*\*\*This carpet is manufactured to be ADA compliant, but to be fully ADA compliant, the end-user must ensure the carpet is adhered to the floor and installed as outlined in the ADA standards.

[Installation Guidelines](#)

[Maintenance Guidelines](#)

Specifications are subject to nominal manufacturing variance. Material supply and/or manufacturing processes may necessitate changes without notice.

This product is an exclusive design and may not be duplicated in any manner. Use of this design in the creation of another product design is also strictly prohibited.

Visit [shawcontract.com/testing](http://shawcontract.com/testing) for more information.



Corporate Headquarters +1 800 257 7429 | +1 706 532 7984 | Atlanta +1 404 853 7429 | Bengaluru +91 80 6773 0202 | Beijing +86 10 6568 588 | Chicago +1 312 467 1331 | Dubai +971 4 584 6956 | Hong Kong +852 2623 0371 | Latin America (Miami) +1 305 827 5912 | London +44 207 961 4120 | Los Angeles +1 800 233 1614 | Melbourne +61 3 9939 8543 | Mexico City +55 5010 7600 | Mumbai +91 22 6284 5050 | Nantong +86 400 800 7429 | New York +1 212 953 7429 | Paris +33 (0) 1 81 22 44 39 | San Francisco +1 415 955 1920 | Santiago +562 2431 5000 x550 | São Paulo +55 11 3071 1702 | Shanghai +86 21 3338 4000 | Singapore +65 6733 1811 | Sydney +1 800 556 302

© 2023 Shaw Industries Group, Inc., a Berkshire Hathaway Company  
September 22, 2023