


Slide 1 - Slide 1

CM/ECF Help Desk: 1-866-323-1101

Filing Electronically in the MDL Case

Slide 1 of 45



Welcome to the Western District of Louisiana's filing in a Multi-District Litigation (MDL) demonstration.

You may fast forward or rewind this tutorial at any time by using the **Playback Control Bar** located at the bottom of the screen.

This module has **Closed Captioning** which may be turned on and off by clicking the **CC** button to the right of the **Playback Control Bar**.

CONTINUE

Slide notes


Welcome to the Western District of Louisiana's filing in a Multi-District Litigation demonstration. You may fast forward or rewind this tutorial at any time by using the Playback Control Bar located at the bottom of the screen. This module has Closed Captioning which may be turned on and off by clicking the CC button to the right of the playback Control Bar. Click Continue.

Slide 2 - Slide 2

CM/ECF Help Desk: 1-866-323-1101

Filing Electronically in the MDL Case

Slide 2 of 45



OBJECTIVES

In this demonstration, you will learn to:

- Spread the filing among the member cases;
- Select the applicable member cases;
- Select the applicable filers;
- Deselect attorney/party associations where appropriate; and
- Review the docket text for accuracy.

CONTINUE

Slide notes


In this demonstration, you will learn to: Spread the filing among the member cases; select the applicable member cases; select the applicable filers; deselect attorney/party associations where appropriate; and review the docket text for accuracy.

Slide 3 - Slide 3

CM/ECF Help Desk: 1-866-323-1101

Filing Electronically in the MDL Case

Slide 3 of 45



For the purposes of this demonstration, we will be filing a Motion for Attorney Fees in the MDL; however, it also relates to the following member cases:

UNITED STATES DISTRICT COURT
WESTERN DISTRICT OF LOUISIANA

In Re: Actos (Pioglitazone) Products
Liability Litigation

This Document Applies to:
3:11-cv-1647 Young et al vs. Takeda et al
3:11-cv-1751 Barth et al vs. Takeda et al

MOTION FOR ATTORNEY FEES

[INSERT BODY OF MOTION]

s/Attorney Name
Attorney Name
Law Firm Name
123 Main St Ste 456
Anywhere, USA, 12345
(111)123-4567 (office)
(111)123-4568 (fax)
attorney.name@example.com

[INSERT CERTIFICATE OF SERVICE]

- 3:11-cv-1647
David E. Young and Della
Young vs. Takeda
Pharmaceuticals America
Inc., et al

- 3:11-cv-1751
Alan Barth and Gay Barth
vs. Takeda Pharmaceuticals
America Inc., et al

CONTINUE

Slide notes

For the purposes of this demonstration, we will be filing a Motion for Attorney Fees in the MDL; however, it also relates to the following member cases: 3:11-cv-1647 David E. Young and Della Young vs. Takeda Pharmaceuticals America Inc., et al and 3:11-cv-1751 Alan Barth and Gay Barth vs. Takeda Pharmaceuticals America Inc., et al. Click Continue.

Slide 4 - Slide 4

CM/ECF Help Desk: 1-866-323-1101 Filing Electronically in the MDL Case Slide 4 of 45

CM/ECF - U.S. District Court:Western District of Louisiana-login - Windows Internet Explorer

https://ecf.lawd.uscourts.gov/cgi-bin/login.pl?logout

CM/ECF - U.S. District Court:Western District of Louisiana

ECF Civil Criminal Query Reports Utilities Search Logout

Click Civil.



**U.S. District Court
Western District of Louisiana
Official Court Electronic Document Filing System**

This message is contained in the file OperationNotice.htm.
You may use this file to alert users to current CM/ECF operational issues.

This facility is for Official Court Business only. Activity to and from this site is logged. Document filings on this system are subject to Federal Rule of Civil Procedure 11. Evidence of unauthorized or criminal activity will be forwarded to the appropriate law enforcement officials.

Welcome to the U.S. District Court for the Western District of Louisiana Electronic Document Filing System. This page is for use by attorneys and firms participating in the electronic filing system. The most recent version of the Adobe PDF reader can be obtained by selecting the *PDF Settings* option listed below.

[PDF Settings](#)

Last login: 02-15-2012 13:00

22July2011

https://ecf.lawd.uscourts.gov/cgi-bin/DisplayMenu.pl?CivilEvents

Internet 100%

Slide notes

After logging into CM/ECF, click Civil on the blue menu bar.

Slide 5 - Slide 5

CM/ECF Help Desk: 1-866-323-1101 Filing Electronically in the MDL Case Slide 5 of 45

CM/ECF - U.S. District Court:Western District of Louisiana-Civil Events - Windows Internet Explorer

https://ecf.lawd.uscourts.gov/cgi-bin/DisplayMenu.pl?CivilEvents

CM/ECF - U.S. District Court:Western District of Louisiana

ECF Civil Criminal Query Reports Utilities Search Logout

Civil Events

Case Assignment - Open a Case
[Civil Case - Unassigned](#)
[Civil Case - Unassigned \(Sealed\)](#)

Other Filings
[Discovery Documents](#)
[Notices](#)
[Trial Documents](#)
[Appeal Docs \(Soc Sec, Bkcy, 5th Circ\)](#)
[Other Documents](#)

Initial Pleadings and Service
[Complaints and Other Initiating Documents](#)
[Service of Process](#)
[Answers to Complaints](#)
[Other Answers](#)

Motions and Related Filings
[Motions](#)
[Responses and Replies](#)

Click Motions.

https://ecf.lawd.uscourts.gov/cgi-bin/Dispatch.pl?motion

Slide notes

Since we are filing a motion, click the Motions hyperlink.

Slide 6 - Slide 6

CM/ECF Help Desk: 1-866-323-1101 Filing Electronically in the MDL Case Slide 6 of 45

CM/ECF - U.S. District Court:Western District of Louisiana - Windows Internet Explorer

https://ecf.lawd.uscourts.gov/cgi-bin/Dispatch.pl?motion

CM/ECF - U.S. District Court:Western District of Louisiana

ECF Civil Criminal Query Reports Utilities Search Logout

Motions

Start typing to find an event.

Available Events (click to select events)

- Alter Judgment
- Amend/Correct
- Appeal of Magistrate Judge Decision to District Judge
- Appear Pro Hac Vice
- Appoint Counsel
- Appoint Custodian
- Appoint Expert
- Appoint Guardian/Attorney ad Litem
- Attorney Fees
- Bill of Costs
- Bifurcate
- Bond
- Certification
- Certify
- Change Venue

Selected Events (click to remove events)

Click Attorney Fees.

Next Clear

Done Internet 100%

Slide notes

Our motion is for attorney fees, so click Attorney Fees in the available events box.

Slide 7 - Slide 7

CM/ECF Help Desk: 1-866-323-1101 Filing Electronically in the MDL Case Slide 7 of 45

CM/ECF - U.S. District Court:Western District of Louisiana - Windows Internet Explorer

https://ecf.lawd.uscourts.gov/cgi-bin/Dispatch.pl?motion

CM/ECF - U.S. District Court:Western District of Louisiana

ECF Civil Criminal Query Reports Utilities Search Logout

Motions

Start typing to find another event.

Available Events (click to select events)

- Alter Judgment
- Amend/Correct
- Appeal of Magistrate Judge Decision to District Judge
- Appear Pro Hac Vice
- Appoint Counsel
- Appoint Custodian
- Appoint Expert
- Appoint Guardian/Attorney ad Litem
- Attorney Fees
- Bifurcate
- Bill of Costs
- Bond
- Certificate of Appealability
- Certify Class
- Change Venue

Selected Events (click to remove events)

- Attorney Fees

Next Clear

Click Next.

Done Internet 100%

Slide notes

Attorney Fees should appear in the Selected Events box. Click Next.

Slide 8 - Slide 8

CM/ECF Help Desk: 1-866-323-1101 Filing Electronically in the MDL Case Slide 8 of 45

CM/ECF - U.S. District Court:Western District of Louisiana - Windows Internet Explorer

https://ecf.lawd.uscourts.gov/cgi-bin/Dispatch.pl?718907691121468

CM/ECF - U.S. District Court:Western District of Louisiana

ECF Motions

Civil Case Number

11-2299 Find This Case

Next Click

Type the MDL case number.

All filings MUST be filed in the MD case 6:11-md-2299.

Done Internet 100%

Slide notes

All filings should be made in the Master Docket or MD case which is 6:11-md-2299. Type the case number in the Civil Case Number field.

Slide 9 - Slide 9

CM/ECF Help Desk: 1-866-323-1101 Filing Electronically in the MDL Case Slide 9 of 45

CM/ECF - U.S. District Court:Western District of Louisiana - Windows Internet Explorer

https://ecf.lawd.uscourts.gov/cgi-bin/Dispatch.pl?718907691121468

CM/ECF - U.S. District Court:Western District of Louisiana

ECF Civil Criminal Query Reports Utilities Search Logout

Motions

Civil Case Number

11-2299 Find This Case

Next Clear

Click Find This Case.

All filings MUST be filed in the MD case 6:11-md-2299.

Done Internet 100%

Slide notes

Click Find This Case.

Slide 10 - Slide 10

CM/ECF Help Desk: 1-866-323-1101 Filing Electronically in the MDL Case Slide 10 of 45

CM/ECF - U.S. District Court:Western District of Louisiana - Windows Internet Explorer

https://ecf.lawd.uscourts.gov/cgi-bin/Dispatch.pl?718907691121468

CM/ECF - U.S. District Court:Western District of Louisiana

ECF Motions

Civil Case Number

6:11-md-2299

Next Clear

Click Next.

All filings MUST be filed in the MD case 6:11-md-2299.

Done Internet 100%

Slide notes

Click Next.

Slide 11 - Slide 11

CM/ECF Help Desk: 1-866-323-1101 Filing Electronically in the MDL Case Slide 11 of 45

CM/ECF - U.S. District Court:Western District of Louisiana - Windows Internet Explorer

https://ecf.lawd.uscourts.gov/cgi-bin/Dispatch.pl?404225214711082

CM/ECF - U.S. District Court:Western District of Louisiana

ECF Civil Criminal Query Reports Utilities Search Logout

Motions

[6:11-md-02299-RFD-PJH In Re: Actos \(Pioglitazone\) Products Liability Litigation](#)

Do you want to spread this docket entry? ☒ Yes ☐ No

Next Clear

Click Next.

The selection defaults to YES.

DO NOT change the selection to NO. Your filing should always refer to at least one or more of the member cases.

Done Internet 100%

Slide notes

When asked if you want to spread the docket entry, always ensure the YES radio button is selected. Do not change the selection to NO as your filing should always refer to one or more of the member cases. Click Next.

Slide 12 - Slide 12

CM/ECF Help Desk: 1-866-323-1101 Filing Electronically in the MDL Case Slide 12 of 45

CM/ECF - U.S. District Court:Western District of Louisiana - Windows Internet Explorer

https://ecf.lawd.uscourts.gov/cgi-bin/Dispatch.pl?602112741438829

CM/ECF - U.S. District Court:Western District of Louisiana

ECF Civil Criminal Query Reports Utilities Search Logout

Motions

6:11-md-02299-RFD-PJH In Re: Actos (Pioglitazone) Products Liability Litigation

Select all applicable member cases.

Select associated case to which text should be spread.

*** ALL ***

12-11-cv-02007-RFD-PJH Ruffin v. Takeda Pharmaceuticals North America Inc et al [Multi-district Litigation]

13-11-cv-01647-RFD-PJH Young et al v. Takeda Pharmaceuticals America Inc et al [Multi-district Litigation]

13-11-cv-01651-RFD-PJH Brown et al v. Takeda Pharmaceuticals America Inc et al [Multi-district Litigation]

13-11-cv-01751-RFD-PJH Brown et al v. Takeda Pharmaceuticals America Inc et al [Multi-district Litigation]

Click 11-cv-1647.

Next Clear

NOTE: If the filing relates to ALL member cases, leave "*** ALL ***" highlighted and click Next.

Done Internet 100%

Slide notes

On this screen, the system needs to know which cases your filing relates. If it relates to ALL member cases, leave the ALL selection highlighted. If it does not relate to all member cases, click the first case in the list that applies to your filing. In the case of our filing, 11-cv-1647 is the first case.

Slide 13 - Slide 13

CM/ECF Help Desk: 1-866-323-1101 Filing Electronically in the MDL Case Slide 13 of 45

CM/ECF - U.S. District Court:Western District of Louisiana - Windows Internet Explorer

https://ecf.lawd.uscourts.gov/cgi-bin/Dispatch.pl?602112741438829

CM/ECF - U.S. District Court:Western District of Louisiana

ECF Civil Criminal Query Reports Utilities Search Logout

Motions

[6:11-md-02299-RFD-PJH In Re: Actos \(Pioglitazone\) Products Liability Litigation](#)

Select all applicable member cases.

Select associated case to which text should be spread.

*** ALL ***

- 2:11-cv-02007-RFD-PJH Ruffin v. Takeda Pharmaceuticals North America Inc et al [Multi-district Litigation]
- 3:11-cv-01647-RFD-PJH Young et al v. Takeda Pharmaceuticals America Inc et al [Multi-district Litigation]
- 3:11-cv-01651-RFD-PJH Boyd et al v. Takeda Pharmaceuticals America Inc et al [Multi-district Litigation]
- 3:11-cv-01751-RFD-PJH Barth et al v. Takeda Pharmaceuticals America Inc et al [Multi-district Litigation]

Next Clear

While holding the Ctrl. key down, click 11-cv-1751.

Done Internet 100%

Slide notes

Since we have an additional case to which this filing relates, we need to select it as well. Hold the ctrl. key down, and click the next case which is 11-cv-1751.

Slide 14 - Slide 14

CM/ECF Help Desk: 1-866-323-1101 Filing Electronically in the MDL Case Slide 14 of 45

CM/ECF - U.S. District Court:Western District of Louisiana - Windows Internet Explorer

https://ecf.lawd.uscourts.gov/cgi-bin/Dispatch.pl?602112741438829

CM/ECF - U.S. District Court:Western District of Louisiana

ECF Civil Criminal Query Reports Utilities Search Logout

Motions

[6:11-md-02299-RFD-PJH In Re: Actos \(Pioglitazone\) Products Liability Litigation](#)

Select all applicable member cases.

Select associated case to which text should be spread.

*** ALL ***

2:11-cv-02007-RFD-PJH Ruffin v. Takeda Pharmaceuticals North America Inc et al [Multi-district Litigation]
3:11-cv-01647-RFD-PJH Young et al v. Takeda Pharmaceuticals America Inc et al [Multi-district Litigation]
3:11-cv-01651-RFD-PJH Boyd et al v. Takeda Pharmaceuticals America Inc et al [Multi-district Litigation]
3:11-cv-01751-RFD-PJH Barth et al v. Takeda Pharmaceuticals America Inc et al [Multi-district Litigation]

Next Clear

Click Next.

Done Internet 100%

Slide notes

Ensure both cases are highlighted, and click Next.

Slide 15 - Slide 15

CM/ECF Help Desk: 1-866-323-1101 Filing Electronically in the MDL Case Slide 15 of 45

CM/ECF - U.S. District Court:Western District of Louisiana - Windows Internet Explorer

https://ecf.lawd.uscourts.gov/cgi-bin/Dispatch.pl?738836701874457

CM/ECF - U.S. District Court:Western District of Louisiana

ECF Civil Criminal Query Reports Utilities Search Logout

Motions

6:11-md-02299-RFD-PJH In Re: Actos (Pioglitazone) Products Liability Litigation

Select all applicable parties.

Pick Filer

Collapse All Expand All

Abretske to Ardoin

Artison to Barker

Bartek to Blancett

Blancett to Buck

Carter to Conway

Conway to D'Alessio

Dabiere to Doucette

Doucette to Eli Lilly & Co

Elks to Feland

Ferrell to Gabriel

Geary to Grimes

Grimes to Hickman

Hickman to Kaminski

Kelley-Vanord to Lowe

Macon to McDonald

McMahan to Mitchell

Mitchell to Penton

Pugh to Rosado

Ruffin to Schwing

Sieminski to Takeda Global Research & Development Center Inc

Select the FILE

Hold the Ctrl. key down and click Alan Barth.

Alan Barth 3:11-cv-0175

Gay Barth 3:11-cv-0175

Eli Lilly & Co 3:11-cv-01

Takeda Global Research

Takeda Pharmaceutical C

Takeda Pharmaceuticals

Takeda Pharmaceuticals

Next Clear New File

NOTE: You must select ALL applicable parties in both the member cases AND the MDL case.

Slide notes

All parties in both selected cases as well as the parties in the master docket will appear in the "Select the Party" box. We must select the applicable parties in the member cases AND in the master docket. Essentially, we will be selecting each party twice. Notice the case numbers appear next to the party names. Our filing is on behalf of Alan Barth, Gay Barth, David E. Young, and Della Young. We will select each of them now by holding the ctrl. key down and clicking on their names.

Slide 16 - Slide 16

CM/ECF Help Desk: 1-866-323-1101 Filing Electronically in the MDL Case Slide 16 of 45

CM/ECF - U.S. District Court:Western District of Louisiana - Windows Internet Explorer

https://ecf.lawd.uscourts.gov/cgi-bin/Dispatch.pl?738836701874457

CM/ECF - U.S. District Court:Western District of Louisiana

ECF Civil Criminal Query Reports Utilities Search Logout

Motions

[6:11-md-02299-RFD-PJH In Re: Actos \(Pioglitazone\) Products Liability Litigation](#)

Select all applicable parties.

Pick Filer

Collapse All Expand All

- Abretske to Ardoin
- Artison to Barker
- Bartek to Blancett
- Blancett to Buck
- Carter to Conway
- Conway to D'Alessio
- Dabiere to Doucette
- Doucette to Eli Lilly & Co
- Elks to Feland
- Ferrell to Gabriel
- Geary to Grimes
- Grimes to Hickman
- Hickman to Kaminski
- Kelley-Vanord to Lowe
- Macon to McDonald
- McMahan to Mitchell
- Mitchell to Penton
- Pugh to Rosado
- Ruffin to Schwing
- Sieminski to Takeda Global Research & Development Center Inc

Select the FILER.

Select the Party:

- Alan Barth 3:11-cv-01751-RFD-PJH [rela]
- Gay Barth 3:11-cv-01751-RFD-PJH [pla]**
- Eli Lilly & Co 3:11-
- Takeda Global Rese
- Takeda Pharmaceu
- Takeda Pharmaceu
- Takeda Pharmaceuticals International Inc 3:11-cv-01751-RFD-PJH [dft]
- Takeda Pharmaceuticals L L C 3:11-cv-01751-RFD-PJH [dft]

While holding the Ctrl. key down, click Gay Barth.

Next Clear New Filer

NOTE: You must select ALL applicable parties in both the member cases AND the MDL case.

Internet 100%

Slide notes

While holding the ctrl. key down, click Gay Barth.

Slide 17 - Slide 17

CM/ECF Help Desk: 1-866-323-1101 Filing Electronically in the MDL Case Slide 17 of 45

CM/ECF - U.S. District Court:Western District of Louisiana - Windows Internet Explorer

https://ecf.lawd.uscourts.gov/cgi-bin/Dispatch.pl?738836701874457

CM/ECF - U.S. District Court:Western District of Louisiana

ECF Civil Criminal Query Reports Utilities Search Logout

Motions
6:11-md-02299-RFD-PJH In Re: Actos (Pioglitazone) Products Liability Litigation

Select all applicable parties.

Pick Filer

Collapse All Expand All

- Abretske to Ardoin
- Artison to Barker
- Bartek to Blancett
- Blancett to Buck
- Carter to Conway
- Conway to D'Alessio
- Dabiere to Doucette
- Doucette to Eli Lilly & Co
- Elks to Feland
- Ferrell to Gabriel
- Geary to Grimes
- Grimes to Hickman
- Hickman to Kaminski
- Kelley-Vanord to Lowe
- Macon to McDonald
- McMahan to Mitchell
- Mitchell to Penton
- Pugh to Rosado
- Ruffin to Schwing
- Sieminski to Takeda Global Research & Development Center Inc

Select the FILER.

Select the Party:

- Alan Barth 3:11-cv-01751-RFD-PJH [pla]
- Gay Barth 3:11-cv-01751-RFD-PJH [pla]
- Eli Lilly & Co 3:11-cv-01751-RFD-PJH [dft]
- Takeda Global Research & Development Center Inc 3:11-cv-01751-RFD-PJH [dft]
- Takeda Pharmaceutical Co Ltd 3:11-cv-01751-RFD-PJH [dft]
- Takeda Pharmaceuticals America Inc 3:11-cv-01751-RFD-PJH [dft]
- Takeda Pharmaceuticals International Inc 3:11-cv-01751-RFD-PJH [dft]
- Takeda Pharmaceuticals L L C 3:11-cv-01751-RFD-PJH [dft]

Next Clear

Click the down arrow to scroll down.

NOTE: You must select ALL applicable parties in both the member cases AND the MDL case.

Slide notes

Use the scroll bar to view additional names in the Select the Party box.

Slide 18 - Slide 18

CM/ECF Help Desk: 1-866-323-1101 Filing Electronically in the MDL Case Slide 18 of 45

CM/ECF - U.S. District Court:Western District of Louisiana - Windows Internet Explorer

https://ecf.lawd.uscourts.gov/cgi-bin/Dispatch.pl?738836701874457

CM/ECF - U.S. District Court:Western District of Louisiana

ECF Civil Criminal Query Reports Utilities Search Logout

Motions

[6:11-md-02299-RFD-PJH In Re: Actos \(Pioglitazone\) Products Liability Litigation](#)

Select all applicable parties.

Pick Filer

Collapse All Expand All

- Abretske to Ardoin
- Artison to Barker
- Bartek to Blancett
- Blancett to Buck
- Carter to Conway
- Conway to D'Alessio
- Dabiere to Doucette
- Doucette to Eli Lilly & Co
- Elks to Feland
- Ferrell to Gabriel
- Geary to Grimes
- Grimes to Hickman
- Hickman to Kaminski
- Kelley-Vanord to Lowe
- Macon to McDonald
- McMahan to Mitchell
- Mitchell to Penton
- Pugh to Rosado
- Ruffin to Schwing
- Sieminski to Takeda Global Research & Development Center Inc

Select the FILER.

Select the Party:

- Takeda Pharmaceuticals North America Inc 3:11-cv-01647-RFD-PJH [dft]
- Takeda San Diego Inc 3:11-cv-01647-RFD-PJH [dft]
- David E Young 3:11-cv-01647-RFD-PJH [pla]
- Della Young 3:11-cv-01647-RFD-PJH [pla]
- Paul A
- Victor
- Jerald
- Henry

While holding the Ctrl. key down, click David E Young.

Next Clear New Filer

NOTE: You must select ALL applicable parties in both the member cases AND the MDL case.

Slide notes

While holding the ctrl. key down, click David E. Young.

Slide 19 - Slide 19

CM/ECF Help Desk: 1-866-323-1101 Filing Electronically in the MDL Case Slide 19 of 45

CM/ECF - U.S. District Court:Western District of Louisiana - Windows Internet Explorer

https://ecf.lawd.uscourts.gov/cgi-bin/Dispatch.pl?738836701874457

CM/ECF - U.S. District Court:Western District of Louisiana

ECF Civil Criminal Query Reports Utilities Search Logout

Motions

[6:11-md-02299-RFD-PJH In Re: Actos \(Pioglitazone\) Products Liability Litigation](#)

Select all applicable parties.

Pick Filer

Collapse All Expand All

- Abretske to Ardoin
- Artison to Barker
- Bartek to Blancett
- Blancett to Buck
- Carter to Conway
- Conway to D'Alessio
- Dabiere to Doucette
- Doucette to Eli Lilly & Co
- Elks to Feland
- Ferrell to Gabriel
- Geary to Grimes
- Grimes to Hickman
- Hickman to Kaminski
- Kelley-Vanord to Lowe
- Macon to McDonald
- McMahan to Mitchell
- Mitchell to Penton
- Pugh to Rosado
- Ruffin to Schwing
- Sieminski to Takeda Global Research & Development Center Inc

Select the FILER.

Select the Party:

- Takeda Pharmaceuticals North America Inc 3:11-cv-01647-RFD-PJH [dft]
- Takeda San Diego Inc 3:11-cv-01647-RFD-PJH [dft]
- David F Young 3:11-cv-01647-RFD-PJH [pla]
- Della Young 3:11-cv-01647-RFD-PJH [pla]**
- Paul Abretske 6:11-md-02299-RFD-PJH [pla]
- Victor
- Jerald
- Henry

While holding the Ctrl. key down, click Della Young.

Next Clear New Filer

NOTE: You must select ALL applicable parties in both the member cases AND the MDL case.

Slide notes

While holding the ctrl. key down, click Della Young.

Slide 20 - Slide 20

CM/ECF Help Desk: 1-866-323-1101 Filing Electronically in the MDL Case Slide 20 of 45

CM/ECF - U.S. District Court:Western District of Louisiana - Windows Internet Explorer

https://ecf.lawd.uscourts.gov/cgi-bin/Dispatch.pl?738836701874457

CM/ECF - U.S. District Court:Western District of Louisiana

ECF Civil Criminal Query Reports Utilities Search Logout

Motions
6:11-md-02299-RFD-PJH In Re: Actos (Pioglitazone) Products Liability Litigation

Select all applicable parties.

Pick Filer

Collapse All Expand All

- Abretske to Ardoin
- Artison to Barker
- Bartek to Blancett
- Blancett to Buck
- Carter to Conway
- Conway to D'Alessio
- Dabiere to Doucette
- Doucette to Eli Lilly & Co
- Elks to Feland
- Ferrell to Gabriel
- Geary to Grimes
- Grimes to Hickman
- Hickman to Kaminski
- Kelley-Vanord to Lowe
- Macon to McDonald
- McMahan to Mitchell
- Mitchell to Penton
- Pugh to Rosado
- Ruffin to Schwing
- Sieminski to Takeda Global Research & Development Center Inc

Select the FILER.

Select the Party:

- Takeda Pharmaceuticals North America Inc 3:11-cv-01647-RFD-PJH [dft]
- Takeda San Diego Inc 3:11-cv-01647-RFD-PJH [dft]
- David E Young 3:11-cv-01647-RFD-PJH [pla]
- Della Young 3:11-cv-01647-RFD-PJH [pla]
- Paul Abretske 6:11-md-02299-RFD-PJH [pla]
- Victoria Abretske 6:11-md-02299-RFD-PJH [pla]
- Jerald Adams 6:11-md-02299-RFD-PJH [pla]
- Henry J Aigner 6:11-md-02299-RFD-PJH [pla]

Next Clear

Click the down arrow to scroll down.

NOTE: You must select ALL applicable parties in both the member cases AND the MDL case.

Slide notes

Click the down arrow to scroll down.

Slide 21 - Slide 21

CM/ECF Help Desk: 1-866-323-1101 Filing Electronically in the MDL Case Slide 21 of 45

CM/ECF - U.S. District Court:Western District of Louisiana - Windows Internet Explorer

https://ecf.lawd.uscourts.gov/cgi-bin/Dispatch.pl?738836701874457

CM/ECF - U.S. District Court:Western District of Louisiana

ECF Civil Criminal Query Reports Utilities Search Logout

Motions

[6:11-md-02299-RFD-PJH In Re: Actos \(Pioglitazone\) Products Liability Litigation](#)

Select all applicable parties.

Pick Filer

Collapse All Expand All

- Abretske to Ardoin
- Artison to Barker
- Bartek to Blancett
- Blancett to Buck
- Carter to Conway
- Conway to D'Alessio
- Dabiere to Doucette
- Doucette to Eli Lilly & Co
- Elks to Feland
- Ferrell to Gabriel
- Geary to Grimes
- Grimes to Hickman
- Hickman to Kaminski
- Kelley-Vanord to Lowe
- Macon to McDonald
- McMahan to Mitchell
- Mitchell to Penton
- Pugh to Rosado
- Ruffin to Schwing
- Sieminski to Takeda Global Research & Development Center Inc

Select the FILER.

Select the Party:

- Robert Banks 6:11-md-02299-RFD-PJH [pla]
- Phillip M Barker, Jr 6:11-md-02299-RFD-PJH [pla]
- Nancy Bartek 6:11-md-02299-RFD-PJH [pla]
- Terry Bartel 6:11-md-02299-RFD-PJH [pla]
- Alan Barth 6:11-md-02299-RFD-PJH [pla]
- Gay Barth 6:11-md-02299-RFD-PJH [pla]
- Carol B 6:11-md-02299-RFD-PJH [pla]
- Edna B 6:11-md-02299-RFD-PJH [pla]

While holding the Ctrl. key down, click Alan Barth.

Next Clear New Filer

NOTE: You must select ALL applicable parties in both the member cases AND the MDL case.

Slide notes

Notice that we selected the parties in their member case capacities, and we are now selecting them in the master docket.

Slide 22 - Slide 22

CM/ECF Help Desk: 1-866-323-1101 Filing Electronically in the MDL Case Slide 22 of 45

CM/ECF - U.S. District Court:Western District of Louisiana - Windows Internet Explorer

https://ecf.lawd.uscourts.gov/cgi-bin/Dispatch.pl?738836701874457

CM/ECF - U.S. District Court:Western District of Louisiana

ECF Civil Criminal Query Reports Utilities Search Logout

Motions

[6:11-md-02299-RFD-PJH In Re: Actos \(Pioglitazone\) Products Liability Litigation](#)

Select all applicable parties.

Pick Filer

Collapse All Expand All

- Abretske to Ardoin
- Artison to Barker
- Bartek to Blancett
- Blancett to Buck
- Carter to Conway
- Conway to D'Alessio
- Dabiere to Doucette
- Doucette to Eli Lilly & Co
- Elks to Feland
- Ferrell to Gabriel
- Geary to Grimes
- Grimes to Hickman
- Hickman to Kaminski
- Kelley-Vanord to Lowe
- Macon to McDonald
- McMahan to Mitchell
- Mitchell to Penton
- Pugh to Rosado
- Ruffin to Schwing
- Sieminski to Takeda Global Research & Development Center Inc

Select the FILER.

Select the Party:

- Robert Banks 6:11-md-02299-RFD-PJH [pla]
- Phillip M Barker, Jr 6:11-md-02299-RFD-PJH [pla]
- Nancy Bartek 6:11-md-02299-RFD-PJH [pla]
- Terry Bartel 6:11-md-02299-RFD-PJH [pla]
- Alan Barth 6:11-md-02299-RFD-PJH [pla]
- Gay Barth 6:11-md-02299-RFD-PJH [pla]
- Carol Bendorf 6:11-md-02299-RFD-PJH [pla]
- Edna Be... 6:11-md-02299-RFD-PJH [pla]

Next

While holding the Ctrl. key down, click Gay Barth.

NOTE: You must select ALL applicable parties in both the member cases AND the MDL case.

Slide notes

Remember to hold the ctrl. key while clicking the party names to ensure all applicable parties are selected.

Slide 23 - Slide 23

CM/ECF Help Desk: 1-866-323-1101 Filing Electronically in the MDL Case Slide 23 of 45

CM/ECF - U.S. District Court:Western District of Louisiana - Windows Internet Explorer

https://ecf.lawd.uscourts.gov/cgi-bin/Dispatch.pl?738836701874457

CM/ECF - U.S. District Court:Western District of Louisiana

ECF Civil Criminal Query Reports Utilities Search Logout

Motions

[6:11-md-02299-RFD-PJH In Re: Actos \(Pioglitazone\) Products Liability Litigation](#)

Select all applicable parties.

Pick Filer

Collapse All Expand All

- Abretske to Ardoin
- Artison to Barker
- Bartek to Blancett
- Blancett to Buck
- Carter to Conway
- Conway to D'Alessio
- Dabiere to Doucette
- Doucette to Eli Lilly & Co
- Elks to Feland
- Ferrell to Gabriel
- Geary to Grimes
- Grimes to Hickman
- Hickman to Kaminski
- Kelley-Vanord to Lowe
- Macon to McDonald
- McMahan to Mitchell
- Mitchell to Penton
- Pugh to Rosado
- Ruffin to Schwing
- Sieminski to Takeda Global Research & Development Center Inc

Select the FILER.

Select the Party:

- Robert Banks 6:11-md-02299-RFD-PJH [pla]
- Phillip M Barker, Jr 6:11-md-02299-RFD-PJH [pla]
- Nancy Bartek 6:11-md-02299-RFD-PJH [pla]
- Terry Bartel 6:11-md-02299-RFD-PJH [pla]
- Alan Barth 6:11-md-02299-RFD-PJH [pla]
- Gay Barth 6:11-md-02299-RFD-PJH [pla]
- Carol Bendorf 6:11-md-02299-RFD-PJH [pla]
- Edna Bennett 6:11-md-02299-RFD-PJH [pla]

Next Clear

Click the down arrow to scroll down.

NOTE: You must select ALL applicable parties in both the member cases AND the MDL case.

Slide notes

Click the down arrow to scroll down and view additional names.

Slide 24 - Slide 24

CM/ECF Help Desk: 1-866-323-1101 Filing Electronically in the MDL Case Slide 24 of 45

CM/ECF - U.S. District Court:Western District of Louisiana - Windows Internet Explorer

https://ecf.lawd.uscourts.gov/cgi-bin/Dispatch.pl?738836701874457

CM/ECF - U.S. District Court:Western District of Louisiana

ECF Civil Criminal Query Reports Utilities Search Logout

Motions
6:11-md-02299-RFD-PJH In Re: Actos (Pioglitazone) Products Liability Litigation

Select all applicable parties.

Pick Filer

Collapse All Expand All

- Abretske to Ardoin
- Artison to Barker
- Bartek to Blancett
- Blancett to Buck
- Carter to Conway
- Conway to D'Alessio
- Dabiere to Doucette
- Doucette to Eli Lilly & Co
- Elks to Feland
- Ferrell to Gabriel
- Geary to Grimes
- Grimes to Hickman
- Hickman to Kaminski
- Kelley-Vanord to Lowe
- Macon to McDonald
- McMahan to Mitchell
- Mitchell to Penton
- Pugh to Rosado
- Ruffin to Schwing
- Sieminski to Takeda Global Research & Development Center Inc

Select the FILER.

Select the Party:

- Nina Weant 6:11-md-02299-RFD-PJH [pla]
- Edwin Williams 6:11-md-02299-RFD-PJH [pla]
- John S Williams 6:11-md-02299-RFD-PJH [pla]
- Ralph Williams 6:11-md-02299-RFD-PJH [pla]
- William O Wisdom 6:11-md-02299-RFD-PJH [pla]
- Donna Woolley 6:11-md-02299-RFD-PJH [pla]
- David E Young 6:11-md-02299-RFD-PJH [pla]
- Della Young 6:11-md-02299-RFD-PJH [pla]

Next

While holding the Ctrl. key down, click David E Young.

NOTE: You must select ALL applicable parties in both the member cases AND the MDL case.

Internet 100%

Slide notes

Hold the ctrl. key down, and click David E. Young.

Slide 25 - Slide 25

CM/ECF Help Desk: 1-866-323-1101 Filing Electronically in the MDL Case Slide 25 of 45

CM/ECF - U.S. District Court:Western District of Louisiana - Windows Internet Explorer

https://ecf.lawd.uscourts.gov/cgi-bin/Dispatch.pl?738836701874457

CM/ECF - U.S. District Court:Western District of Louisiana

ECF Civil Criminal Query Reports Utilities Search Logout

Motions
6:11-md-02299-RFD-PJH In Re: Actos (Pioglitazone) Products Liability Litigation

Select all applicable parties.

Pick Filer

Collapse All Expand All

- Abretske to Ardoin
- Artison to Barker
- Bartek to Blancett
- Blancett to Buck
- Carter to Conway
- Conway to D'Alessio
- Dabiere to Doucette
- Doucette to Eli Lilly & Co
- Elks to Feland
- Ferrell to Gabriel
- Geary to Grimes
- Grimes to Hickman
- Hickman to Kaminski
- Kelley-Vanord to Lowe
- Macon to McDonald
- McMahan to Mitchell
- Mitchell to Penton
- Pugh to Rosado
- Ruffin to Schwing
- Sieminski to Takeda Global Research & Development Center Inc

Select the FILER.

Select the Party:

- Nina Weant 6:11-md-02299-RFD-PJH [pla]
- Edwin Williams 6:11-md-02299-RFD-PJH [pla]
- John S Williams 6:11-md-02299-RFD-PJH [pla]
- Ralph Williams 6:11-md-02299-RFD-PJH [pla]
- William O Wisdom 6:11-md-02299-RFD-PJH [pla]
- Donna Wooley 6:11-md-02299-RFD-PJH [pla]
- David F Young 6:11-md-02299-RFD-PJH [pla]
- Della Young 6:11-md-02299-RFD-PJH [pla]

Next

While holding the Ctrl. key down, click Della Young.

NOTE: You must select ALL applicable parties in both the member cases AND the MDL case.

Slide notes

Hold the ctrl. key down, and click the last filing party, Della Young.

Slide 26 - Slide 26

CM/ECF Help Desk: 1-866-323-1101 Filing Electronically in the MDL Case Slide 26 of 45

CM/ECF - U.S. District Court:Western District of Louisiana - Windows Internet Explorer

https://ecf.lawd.uscourts.gov/cgi-bin/Dispatch.pl?738836701874457

CM/ECF - U.S. District Court:Western District of Louisiana

ECF Civil Criminal Query Reports Utilities Search Logout

Motions

[6:11-md-02299-RFD-PJH In Re: Actos \(Pioglitazone\) Products Liability Litigation](#)

Select all applicable parties.

Pick Filer

Collapse All Expand All

- Abretske to Ardoin
- Artison to Barker
- Bartek to Blancett
- Blancett to Buck
- Carter to Conway
- Conway to D'Alessio
- Dabiere to Doucette
- Doucette to Eli Lilly & Co
- Elks to Feland
- Ferrell to Gabriel
- Geary to Grimes
- Grimes to Hickman
- Hickman to Kaminski
- Kelley-Vanord to Lowe
- Macon to McDonald
- McMahan to Mitchell
- Mitchell to Penton
- Pugh to Rosado
- Ruffin to Schwing
- Sieminski to Takeda Global Research & Development Center Inc

Select the FILER.

Select the Party:

- Nina Weant 6:11-md-02299-RFD-PJH [pla]
- Edwin Williams 6:11-md-02299-RFD-PJH [pla]
- John S Williams 6:11-md-02299-RFD-PJH [pla]
- Ralph Williams 6:11-md-02299-RFD-PJH [pla]
- William O Wisdom 6:11-md-02299-RFD-PJH [pla]
- Donna Wooley 6:11-md-02299-RFD-PJH [pla]
- David E Young 6:11-md-02299-RFD-PJH [pla]
- Della Young 6:11-md-02299-RFD-PJH [pla]

Next Clear New Filer

Click Next.

NOTE: You must select ALL applicable parties in both the member cases AND the MDL case.

Slide notes

Once all applicable parties are selected, click Next.

Slide 27 - Slide 27

CM/ECF Help Desk: 1-866-323-1101 Filing Electronically in the MDL Case Slide 27 of 45

CM/ECF - U.S. District Court:Western District of Louisiana - Windows Internet Explorer

https://ecf.lawd.uscourts.gov/cgi-bin/Dispatch.pl?606103716315239

CM/ECF - U.S. District Court:Western District of Louisi...

ECF Civil Criminal Query Reports Utilities Search Logout

Motions

[6:11-md-02299-RFD-PJH In Re: Actos \(Pioglitazone\) Products Liability Litigation](#)

The following attorney/party associations do not exist for the above case(s).

Please check the box on the left of the screen for associations which should be created.

If the association should *not* be created, be sure the box is *unchecked*.

3:11-cv-01751-RFD-PJH Barth et al v. Takeda Pharmaceuticals America Inc et al

☒ Alan Barth (pty:pla) represented by C Whidden (aty) ☐ Lead ☒ Notice

☒ [redacted] represented by C Whidden (aty) ☐ Lead ☒ Notice

☒ [redacted] represented by C Whidden (aty) ☐ Lead ☒ Notice

☒ [redacted] represented by C Whidden (aty) ☐ Lead ☒ Notice

3:11-cv-01647-RFD-PJH Young et al v. Takeda Pharmaceuticals America Inc et al

☒ David E Young (pty:pla) represented by C Whidden (aty) ☐ Lead ☒ Notice

☒ David E Young (pty:pla) represented by C Whidden (aty) ☐ Lead ☒ Notice

☒ Della Young (pty:pla) represented by C Whidden (aty) ☐ Lead ☒ Notice

☒ Della Young (pty:pla) represented by C Whidden (aty) ☐ Lead ☒ Notice

6:11-md-02299-RFD-PJH In Re: Actos (Pioglitazone) Products Liability Litigation

☒ Alan Barth (pty:pla) represented by C Whidden (aty) ☐ Lead ☒ Notice

☒ Alan Barth (pty:pla) represented by C Whidden (aty) ☐ Lead ☒ Notice

☒ Gay Barth (pty:pla) represented by C Whidden (aty) ☐ Lead ☒ Notice

☒ Gay Barth (pty:pla) represented by C Whidden (aty) ☐ Lead ☒ Notice

☒ David E Young (pty:pla) represented by C Whidden (aty) ☐ Lead ☒ Notice

Done

Internet 100%

Slide notes

If this screen appears, the system does not recognize you as an attorney for selected parties in these particular cases. If you are submitting a joint filing, you will need to uncheck the parties you do not represent. For any party you do not uncheck, you will appear on the docket sheet as counsel for that party. Please ensure you represent any checked party. We will now uncheck the parties that are not represented by the filing attorney.

Slide 28 - Slide 28

CM/ECF Help Desk: 1-866-323-1101 Filing Electronically in the MDL Case Slide 28 of 45

CM/ECF - U.S. District Court:Western District of Louisiana - Windows Internet Explorer

https://ecf.lawd.uscourts.gov/cgi-bin/Dispatch.pl?606103716315239

CM/ECF - U.S. District Court:Western District of Louisiana

ECF Civil Criminal Query Reports Utilities Search Logout

Motions

[6:11-md-02299-RFD-PJH In Re: Actos \(Pioglitazone\) Products Liability Litigation](#)

The following attorney/party associations do not exist for the above case(s).

Please check the box on the left of the screen for associations which should be created.

If the association should *not* be created, be sure the box is *unchecked*.

3:11-cv-01751-RFD-PJH Barth et al v. Takeda Pharmaceuticals America Inc et al

<input type="checkbox"/> Alan Barth (pty:pla) represented by C Whidden (aty)	<input type="checkbox"/> Lead <input checked="" type="checkbox"/> Notice
<input type="checkbox"/> Alan Barth (pty:pla) represented by C Whidden (aty)	<input type="checkbox"/> Lead <input checked="" type="checkbox"/> Notice
<input checked="" type="checkbox"/> Gay Barth (pty:pla) represented by C Whidden (aty)	<input type="checkbox"/> Lead <input checked="" type="checkbox"/> Notice
<input type="checkbox"/> [redacted] represented by C Whidden (aty)	<input type="checkbox"/> Lead <input checked="" type="checkbox"/> Notice

Uncheck.

3:11-cv-01751-RFD-PJH Young et al v. Takeda Pharmaceuticals America Inc et al

<input checked="" type="checkbox"/> David E Young (pty:pla) represented by C Whidden (aty)	<input type="checkbox"/> Lead <input checked="" type="checkbox"/> Notice
<input checked="" type="checkbox"/> David E Young (pty:pla) represented by C Whidden (aty)	<input type="checkbox"/> Lead <input checked="" type="checkbox"/> Notice
<input checked="" type="checkbox"/> Della Young (pty:pla) represented by C Whidden (aty)	<input type="checkbox"/> Lead <input checked="" type="checkbox"/> Notice
<input checked="" type="checkbox"/> Della Young (pty:pla) represented by C Whidden (aty)	<input type="checkbox"/> Lead <input checked="" type="checkbox"/> Notice

6:11-md-02299-RFD-PJH In Re: Actos (Pioglitazone) Products Liability Litigation

<input checked="" type="checkbox"/> Alan Barth (pty:pla) represented by C Whidden (aty)	<input type="checkbox"/> Lead <input checked="" type="checkbox"/> Notice
<input checked="" type="checkbox"/> Alan Barth (pty:pla) represented by C Whidden (aty)	<input type="checkbox"/> Lead <input checked="" type="checkbox"/> Notice
<input checked="" type="checkbox"/> Gay Barth (pty:pla) represented by C Whidden (aty)	<input type="checkbox"/> Lead <input checked="" type="checkbox"/> Notice
<input checked="" type="checkbox"/> Gay Barth (pty:pla) represented by C Whidden (aty)	<input type="checkbox"/> Lead <input checked="" type="checkbox"/> Notice
<input checked="" type="checkbox"/> David E Young (pty:pla) represented by C Whidden (aty)	<input type="checkbox"/> Lead <input checked="" type="checkbox"/> Notice

Done Internet 100%

Slide notes

Slide 29 - Slide 29

CM/ECF Help Desk: 1-866-323-1101 Filing Electronically in the MDL Case Slide 29 of 45

CM/ECF - U.S. District Court:Western District of Louisiana - Windows Internet Explorer

https://ecf.lawd.uscourts.gov/cgi-bin/Dispatch.pl?606103716315239

CM/ECF - U.S. District Court:Western District of Louisi...

ECF Civil Criminal Query Reports Utilities Search Logout

Motions

[6:11-md-02299-RFD-PJH In Re: Actos \(Pioglitazone\) Products Liability Litigation](#)

The following attorney/party associations do not exist for the above case(s).

Please check the box on the left of the screen for associations which should be created.

If the association should *not* be created, be sure the box is *unchecked*.

3:11-cv-01751-RFD-PJH Barth et al v. Takeda Pharmaceuticals America Inc et al

<input type="checkbox"/> Alan Barth (pty:pla) represented by C Whidden (aty)	<input type="checkbox"/> Lead <input checked="" type="checkbox"/> Notice
<input type="checkbox"/> Alan Barth (pty:pla) represented by C Whidden (aty)	<input type="checkbox"/> Lead <input checked="" type="checkbox"/> Notice
<input type="checkbox"/> Gay Barth (pty:pla) represented by C Whidden (aty)	<input type="checkbox"/> Lead <input checked="" type="checkbox"/> Notice
<input checked="" type="checkbox"/> Gay Barth (pty:pla) represented by C Whidden (aty)	<input type="checkbox"/> Lead <input checked="" type="checkbox"/> Notice

3:11-cv-01751-RFD-PJH Young et al v. Takeda Pharmaceuticals America Inc et al

<input checked="" type="checkbox"/> David E Young (pty:pla) represented by C Whidden (aty)	<input type="checkbox"/> Lead <input checked="" type="checkbox"/> Notice
<input checked="" type="checkbox"/> David E Young (pty:pla) represented by C Whidden (aty)	<input type="checkbox"/> Lead <input checked="" type="checkbox"/> Notice
<input checked="" type="checkbox"/> Della Young (pty:pla) represented by C Whidden (aty)	<input type="checkbox"/> Lead <input checked="" type="checkbox"/> Notice
<input checked="" type="checkbox"/> Della Young (pty:pla) represented by C Whidden (aty)	<input type="checkbox"/> Lead <input checked="" type="checkbox"/> Notice

6:11-md-02299-RFD-PJH In Re: Actos (Pioglitazone) Products Liability Litigation

<input checked="" type="checkbox"/> Alan Barth (pty:pla) represented by C Whidden (aty)	<input type="checkbox"/> Lead <input checked="" type="checkbox"/> Notice
<input checked="" type="checkbox"/> Alan Barth (pty:pla) represented by C Whidden (aty)	<input type="checkbox"/> Lead <input checked="" type="checkbox"/> Notice
<input checked="" type="checkbox"/> Gay Barth (pty:pla) represented by C Whidden (aty)	<input type="checkbox"/> Lead <input checked="" type="checkbox"/> Notice
<input checked="" type="checkbox"/> Gay Barth (pty:pla) represented by C Whidden (aty)	<input type="checkbox"/> Lead <input checked="" type="checkbox"/> Notice
<input checked="" type="checkbox"/> David E Young (pty:pla) represented by C Whidden (aty)	<input type="checkbox"/> Lead <input checked="" type="checkbox"/> Notice

Done Internet 100%

Slide notes

Slide 30 - Slide 30

CM/ECF Help Desk: 1-866-323-1101 Filing Electronically in the MDL Case Slide 30 of 45

CM/ECF - U.S. District Court:Western District of Louisiana - Windows Internet Explorer

https://ecf.lawd.uscourts.gov/cgi-bin/Dispatch.pl?606103716315239

CM/ECF - U.S. District Court:Western District of Louisi...

ECF Civil Criminal Query Reports Utilities Search Logout

Motions

[6:11-md-02299-RFD-PJH In Re: Actos \(Pioglitazone\) Products Liability Litigation](#)

The following attorney/party associations do not exist for the above case(s).

Please check the box on the left of the screen for associations which should be created.

If the association should *not* be created, be sure the box is *unchecked*.

3:11-cv-01751-RFD-PJH Barth et al v. Takeda Pharmaceuticals America Inc et al

<input type="checkbox"/> Alan Barth (pty:pla) represented by C Whidden (aty)	<input type="checkbox"/> Lead <input checked="" type="checkbox"/> Notice
<input type="checkbox"/> Alan Barth (pty:pla) represented by C Whidden (aty)	<input type="checkbox"/> Lead <input checked="" type="checkbox"/> Notice
<input type="checkbox"/> Gay Barth (pty:pla) represented by C Whidden (aty)	<input type="checkbox"/> Lead <input checked="" type="checkbox"/> Notice
<input type="checkbox"/> Gay Barth (pty:pla) represented by C Whidden (aty)	<input type="checkbox"/> Lead <input checked="" type="checkbox"/> Notice

3:11-cv-01647-RFD-PJH Young et al v. Takeda Pharmaceuticals America Inc et al

<input checked="" type="checkbox"/> David E Young (pty:pla) represented by C Whidden (aty)	<input type="checkbox"/> Lead <input checked="" type="checkbox"/> Notice
<input checked="" type="checkbox"/> David E Young (pty:pla) represented by C Whidden (aty)	<input type="checkbox"/> Lead <input checked="" type="checkbox"/> Notice
<input checked="" type="checkbox"/> Della Young (pty:pla) represented by C Whidden (aty)	<input type="checkbox"/> Lead <input checked="" type="checkbox"/> Notice
<input checked="" type="checkbox"/> Della Young (pty:pla) represented by C Whidden (aty)	<input type="checkbox"/> Lead <input checked="" type="checkbox"/> Notice

6:11-md-02299-RFD-PJH In Re: Actos (Pioglitazone) Products Liability Litigation

<input checked="" type="checkbox"/> Alan Barth (pty:pla) represented by C Whidden (aty)	<input type="checkbox"/> Lead <input checked="" type="checkbox"/> Notice
<input type="checkbox"/> Alan Barth (pty:pla) represented by C Whidden (aty)	<input type="checkbox"/> Lead <input checked="" type="checkbox"/> Notice
<input type="checkbox"/> Alan Barth (pty:pla) represented by C Whidden (aty)	<input type="checkbox"/> Lead <input checked="" type="checkbox"/> Notice
<input type="checkbox"/> Alan Barth (pty:pla) represented by C Whidden (aty)	<input type="checkbox"/> Lead <input checked="" type="checkbox"/> Notice
<input checked="" type="checkbox"/> David E Young (pty:pla) represented by C Whidden (aty)	<input type="checkbox"/> Lead <input checked="" type="checkbox"/> Notice

Done Internet 100%

Slide notes

Slide 31 - Slide 31

CM/ECF Help Desk: 1-866-323-1101 Filing Electronically in the MDL Case Slide 31 of 45

CM/ECF - U.S. District Court:Western District of Louisiana - Windows Internet Explorer

https://ecf.lawd.uscourts.gov/cgi-bin/Dispatch.pl?606103716315239

CM/ECF - U.S. District Court:Western District of Louisiana

ECF Civil Criminal Query Reports Utilities Search Logout

Motions

[6:11-md-02299-RFD-PJH In Re: Actos \(Pioglitazone\) Products Liability Litigation](#)

The following attorney/party associations do not exist for the above case(s).

Please check the box on the left of the screen for associations which should be created.

If the association should *not* be created, be sure the box is *unchecked*.

3:11-cv-01751-RFD-PJH Barth et al v. Takeda Pharmaceuticals America Inc et al

<input type="checkbox"/> Alan Barth (pty:pla) represented by C Whidden (aty)	<input type="checkbox"/> Lead <input checked="" type="checkbox"/> Notice
<input type="checkbox"/> Alan Barth (pty:pla) represented by C Whidden (aty)	<input type="checkbox"/> Lead <input checked="" type="checkbox"/> Notice
<input type="checkbox"/> Gay Barth (pty:pla) represented by C Whidden (aty)	<input type="checkbox"/> Lead <input checked="" type="checkbox"/> Notice
<input type="checkbox"/> Gay Barth (pty:pla) represented by C Whidden (aty)	<input type="checkbox"/> Lead <input checked="" type="checkbox"/> Notice

3:11-cv-01647-RFD-PJH Young et al v. Takeda Pharmaceuticals America Inc et al

<input checked="" type="checkbox"/> David E Young (pty:pla) represented by C Whidden (aty)	<input type="checkbox"/> Lead <input checked="" type="checkbox"/> Notice
<input checked="" type="checkbox"/> David E Young (pty:pla) represented by C Whidden (aty)	<input type="checkbox"/> Lead <input checked="" type="checkbox"/> Notice
<input checked="" type="checkbox"/> Della Young (pty:pla) represented by C Whidden (aty)	<input type="checkbox"/> Lead <input checked="" type="checkbox"/> Notice
<input checked="" type="checkbox"/> Della Young (pty:pla) represented by C Whidden (aty)	<input type="checkbox"/> Lead <input checked="" type="checkbox"/> Notice

6:11-md-02299-RFD-PJH In Re: Actos (Pioglitazone) Products Liability Litigation

<input type="checkbox"/> Alan Barth (pty:pla) represented by C Whidden (aty)	<input type="checkbox"/> Lead <input checked="" type="checkbox"/> Notice
<input type="checkbox"/> Alan Barth (pty:pla) represented by C Whidden (aty)	<input type="checkbox"/> Lead <input checked="" type="checkbox"/> Notice
<input checked="" type="checkbox"/> Gay Barth (pty:pla) represented by C Whidden (aty)	<input type="checkbox"/> Lead <input checked="" type="checkbox"/> Notice
<input type="checkbox"/> Gay Barth (pty:pla) represented by C Whidden (aty)	<input type="checkbox"/> Lead <input checked="" type="checkbox"/> Notice
<input type="checkbox"/> Gay Barth (pty:pla) represented by C Whidden (aty)	<input type="checkbox"/> Lead <input checked="" type="checkbox"/> Notice

Uncheck.

Internet 100%

Slide notes

Slide 32 - Slide 32

CM/ECF Help Desk: 1-866-323-1101 Filing Electronically in the MDL Case Slide 32 of 45

CM/ECF - U.S. District Court:Western District of Louisiana - Windows Internet Explorer

https://ecf.lawd.uscourts.gov/cgi-bin/Dispatch.pl?606103716315239

CM/ECF - U.S. District Court:Western District of Louisi...

ECF Civil Criminal Query Reports Utilities Search Logout

Motions

[6:11-md-02299-RFD-PJH In Re: Actos \(Pioglitazone\) Products Liability Litigation](#)

The following attorney/party associations do not exist for the above case(s).

Please check the box on the left of the screen for associations which should be created.

If the association should *not* be created, be sure the box is *unchecked*.

3:11-cv-01751-RFD-PJH Barth et al v. Takeda Pharmaceuticals America Inc et al

<input type="checkbox"/> Alan Barth (pty:pla) represented by C Whidden (aty)	<input type="checkbox"/> Lead <input checked="" type="checkbox"/> Notice
<input type="checkbox"/> Alan Barth (pty:pla) represented by C Whidden (aty)	<input type="checkbox"/> Lead <input checked="" type="checkbox"/> Notice
<input type="checkbox"/> Gay Barth (pty:pla) represented by C Whidden (aty)	<input type="checkbox"/> Lead <input checked="" type="checkbox"/> Notice
<input type="checkbox"/> Gay Barth (pty:pla) represented by C Whidden (aty)	<input type="checkbox"/> Lead <input checked="" type="checkbox"/> Notice

3:11-cv-01647-RFD-PJH Young et al v. Takeda Pharmaceuticals America Inc et al

<input checked="" type="checkbox"/> David E Young (pty:pla) represented by C Whidden (aty)	<input type="checkbox"/> Lead <input checked="" type="checkbox"/> Notice
<input checked="" type="checkbox"/> David E Young (pty:pla) represented by C Whidden (aty)	<input type="checkbox"/> Lead <input checked="" type="checkbox"/> Notice
<input checked="" type="checkbox"/> Della Young (pty:pla) represented by C Whidden (aty)	<input type="checkbox"/> Lead <input checked="" type="checkbox"/> Notice
<input checked="" type="checkbox"/> Della Young (pty:pla) represented by C Whidden (aty)	<input type="checkbox"/> Lead <input checked="" type="checkbox"/> Notice

6:11-md-02299-RFD-PJH In Re: Actos (Pioglitazone) Products Liability Litigation

<input type="checkbox"/> M. Barth (pty:pla) represented by C Whidden (aty)	<input type="checkbox"/> Lead <input checked="" type="checkbox"/> Notice
<input type="checkbox"/> M. Barth (pty:pla) represented by C Whidden (aty)	<input type="checkbox"/> Lead <input checked="" type="checkbox"/> Notice
<input type="checkbox"/> M. Barth (pty:pla) represented by C Whidden (aty)	<input type="checkbox"/> Lead <input checked="" type="checkbox"/> Notice
<input checked="" type="checkbox"/> Gay Barth (pty:pla) represented by C Whidden (aty)	<input type="checkbox"/> Lead <input checked="" type="checkbox"/> Notice
<input checked="" type="checkbox"/> David E Young (pty:pla) represented by C Whidden (aty)	<input type="checkbox"/> Lead <input checked="" type="checkbox"/> Notice

Done

Internet 100%

Slide notes

Slide 33 - Slide 33

CM/ECF Help Desk: 1-866-323-1101 Filing Electronically in the MDL Case Slide 33 of 45

CM/ECF - U.S. District Court:Western District of Louisiana - Windows Internet Explorer

https://ecf.lawd.uscourts.gov/cgi-bin/Dispatch.pl?606103716315239

CM/ECF - U.S. District Court:Western District of Louisiana

ECF Civil Criminal Query Reports Utilities Search Logout

Motions

[6:11-md-02299-RFD-PJH In Re: Actos \(Pioglitazone\) Products Liability Litigation](#)

The following attorney/party associations do not exist for the above case(s).

Please check the box on the left of the screen for associations which should be created.

If the association should *not* be created, be sure the box is *unchecked*.

3:11-cv-01751-RFD-PJH Barth et al v. Takeda Pharmaceuticals America Inc et al

<input type="checkbox"/> Alan Barth (pty:pla) represented by C Whidden (aty)	<input type="checkbox"/> Lead <input checked="" type="checkbox"/> Notice
<input type="checkbox"/> Alan Barth (pty:pla) represented by C Whidden (aty)	<input type="checkbox"/> Lead <input checked="" type="checkbox"/> Notice
<input type="checkbox"/> Gay Barth (pty:pla) represented by C Whidden (aty)	<input type="checkbox"/> Lead <input checked="" type="checkbox"/> Notice
<input type="checkbox"/> Gay Barth (pty:pla) represented by C Whidden (aty)	<input type="checkbox"/> Lead <input checked="" type="checkbox"/> Notice

3:11-cv-01647-RFD-PJH Young et al v. Takeda Pharmaceuticals America Inc et al

<input checked="" type="checkbox"/> David E Young (pty:pla) represented by C Whidden (aty)	<input type="checkbox"/> Lead <input checked="" type="checkbox"/> Notice
<input checked="" type="checkbox"/> David E Young (pty:pla) represented by C Whidden (aty)	<input type="checkbox"/> Lead <input checked="" type="checkbox"/> Notice
<input checked="" type="checkbox"/> Della Young (pty:pla) represented by C Whidden (aty)	<input type="checkbox"/> Lead <input checked="" type="checkbox"/> Notice
<input checked="" type="checkbox"/> Della Young (pty:pla) represented by C Whidden (aty)	<input type="checkbox"/> Lead <input checked="" type="checkbox"/> Notice

6:11-md-02299-RFD-PJH In Re: Actos (Pioglitazone) Products Liability Litigation

<input type="checkbox"/> Alan Barth (pty:pla) represented by C Whidden (aty)	<input type="checkbox"/> Lead <input checked="" type="checkbox"/> Notice
<input type="checkbox"/> Alan Barth (pty:pla) represented by C Whidden (aty)	<input type="checkbox"/> Lead <input checked="" type="checkbox"/> Notice
<input type="checkbox"/> Gay Barth (pty:pla) represented by C Whidden (aty)	<input type="checkbox"/> Lead <input checked="" type="checkbox"/> Notice
<input type="checkbox"/> Gay Barth (pty:pla) represented by C Whidden (aty)	<input type="checkbox"/> Lead <input checked="" type="checkbox"/> Notice
<input checked="" type="checkbox"/> David E Young (pty:pla) represented by C Whidden (aty)	<input type="checkbox"/> Lead <input checked="" type="checkbox"/> Notice

Done Internet 100%

Scroll to bottom of page.

Slide notes

Slide 34 - Slide 34

CM/ECF Help Desk: 1-866-323-1101 Filing Electronically in the MDL Case Slide 34 of 45

CM/ECF - U.S. District Court:Western District of Louisiana - Windows Internet Explorer

https://ecf.lawd.uscourts.gov/cgi-bin/Dispatch.pl?606103716315239

CM/ECF - U.S. District Court:Western District of Louisiana

ECF Civil Criminal Query Reports Utilities Search Logout

3:11-cv-01751-RFD-PJH Barth et al v. Takeda Pharmaceuticals America Inc et al

<input type="checkbox"/> Alan Barth (pty:pla) represented by C Whidden (aty)	<input type="checkbox"/> Lead <input checked="" type="checkbox"/> Notice
<input type="checkbox"/> Alan Barth (pty:pla) represented by C Whidden (aty)	<input type="checkbox"/> Lead <input checked="" type="checkbox"/> Notice
<input type="checkbox"/> Gay Barth (pty:pla) represented by C Whidden (aty)	<input type="checkbox"/> Lead <input checked="" type="checkbox"/> Notice
<input type="checkbox"/> Gay Barth (pty:pla) represented by C Whidden (aty)	<input type="checkbox"/> Lead <input checked="" type="checkbox"/> Notice

3:11-cv-01647-RFD-PJH Young et al v. Takeda Pharmaceuticals America Inc et al

<input checked="" type="checkbox"/> David E Young (pty:pla) represented by C Whidden (aty)	<input type="checkbox"/> Lead <input checked="" type="checkbox"/> Notice
<input checked="" type="checkbox"/> David E Young (pty:pla) represented by C Whidden (aty)	<input type="checkbox"/> Lead <input checked="" type="checkbox"/> Notice
<input checked="" type="checkbox"/> Della Young (pty:pla) represented by C Whidden (aty)	<input type="checkbox"/> Lead <input checked="" type="checkbox"/> Notice
<input checked="" type="checkbox"/> Della Young (pty:pla) represented by C Whidden (aty)	<input type="checkbox"/> Lead <input checked="" type="checkbox"/> Notice

6:11-md-02299-RFD-PJH In Re: Actos (Pioglitazone) Products Liability Litigation

<input type="checkbox"/> Alan Barth (pty:pla) represented by C Whidden (aty)	<input type="checkbox"/> Lead <input checked="" type="checkbox"/> Notice
<input type="checkbox"/> Alan Barth (pty:pla) represented by C Whidden (aty)	<input type="checkbox"/> Lead <input checked="" type="checkbox"/> Notice
<input type="checkbox"/> Gay Barth (pty:pla) represented by C Whidden (aty)	<input type="checkbox"/> Lead <input checked="" type="checkbox"/> Notice
<input type="checkbox"/> Gay Barth (pty:pla) represented by C Whidden (aty)	<input type="checkbox"/> Lead <input checked="" type="checkbox"/> Notice
<input checked="" type="checkbox"/> David E Young (pty:pla) represented by C Whidden (aty)	<input type="checkbox"/> Lead <input checked="" type="checkbox"/> Notice
<input checked="" type="checkbox"/> David E Young (pty:pla) represented by C Whidden (aty)	<input type="checkbox"/> Lead <input checked="" type="checkbox"/> Notice
<input checked="" type="checkbox"/> Della Young (pty:pla) represented by C Whidden (aty)	<input type="checkbox"/> Lead <input checked="" type="checkbox"/> Notice
<input checked="" type="checkbox"/> Della Young (pty:pla) represented by C Whidden (aty)	<input type="checkbox"/> Lead <input checked="" type="checkbox"/> Notice

☒ Click Next.

Done Internet 100%

Slide notes

Once the information on this screen is correct, click Next.

Slide 35 - Slide 35

CM/ECF Help Desk: 1-866-323-1101 Filing Electronically in the MDL Case Slide 35 of 45

CM/ECF - U.S. District Court:Western District of Louisiana - Windows Internet Explorer

https://ecf.lawd.uscourts.gov/cgi-bin/Dispatch.pl?802099372180732

CM/ECF - U.S. District Court:Western District of Louisiana

ECF Civil Criminal Query Reports Utilities Search Logout

8:11-md-02299-RFD-PJH In Re: Actos (Proglitazone) Products Liability Litigation

A Proposed Order should be submitted with Ex Parte motions and is required for the following specific motions pursuant to LR 7.4 and LR 37.1:

- add additional parties;
- amend pleadings;
- appoint next friend/guardian;
- consolidate;
- continue;
- dismiss (joint);
- extension of time;
- file supplemental pleadings;
- intervene;
- substitution of parties or counsel;
- withdraw counsel;
- all discovery motions.

All other motions require *Memoranda in Support*. Pursuant to LR 7.8:

- A brief in excess of 10 pages requires a table of contents and table of cases.
- A brief in excess of 25 pages requires Leave of court prior to filing.

Any Proposed Order or Memorandum in Support should be submitted as a **separate attachment(s)** to this motion.

Pursuant to LR 7.1: A party filing a motion or response shall transmit a COPY of the motion or response, including attachments and exhibits, to the chambers of the judge assigned to rule on the motion.

Click Next.

Next Clear

Done Internet 100%

Slide notes

Green boxes, such as this one, are friendly reminders to follow the Federal and Local Rules as well as court procedures when filing. After reading, click Next.

Slide 36 - Slide 36

CM/ECF Help Desk: 1-866-323-1101 Filing Electronically in the MDL Case Slide 36 of 45

CM/ECF - U.S. District Court:Western District of Louisiana - Windows Internet Explorer

https://ecf.lawd.uscourts.gov/cgi-bin/Dispatch.pl?133854466227948

CM/ECF - U.S. District Court:Western District of Louisiana

ECF Civil Criminal Query Reports Utilities Search Logout

Motions

[6:11-md-02299-RFD-PJH In Re: Actos \(Pioglitazone\) Products Liability Litigation](#)

Select the pdf document and any attachments.

Main Document

To properly identify your attachments, please enter the following information:

Further identify exhibits by entering:

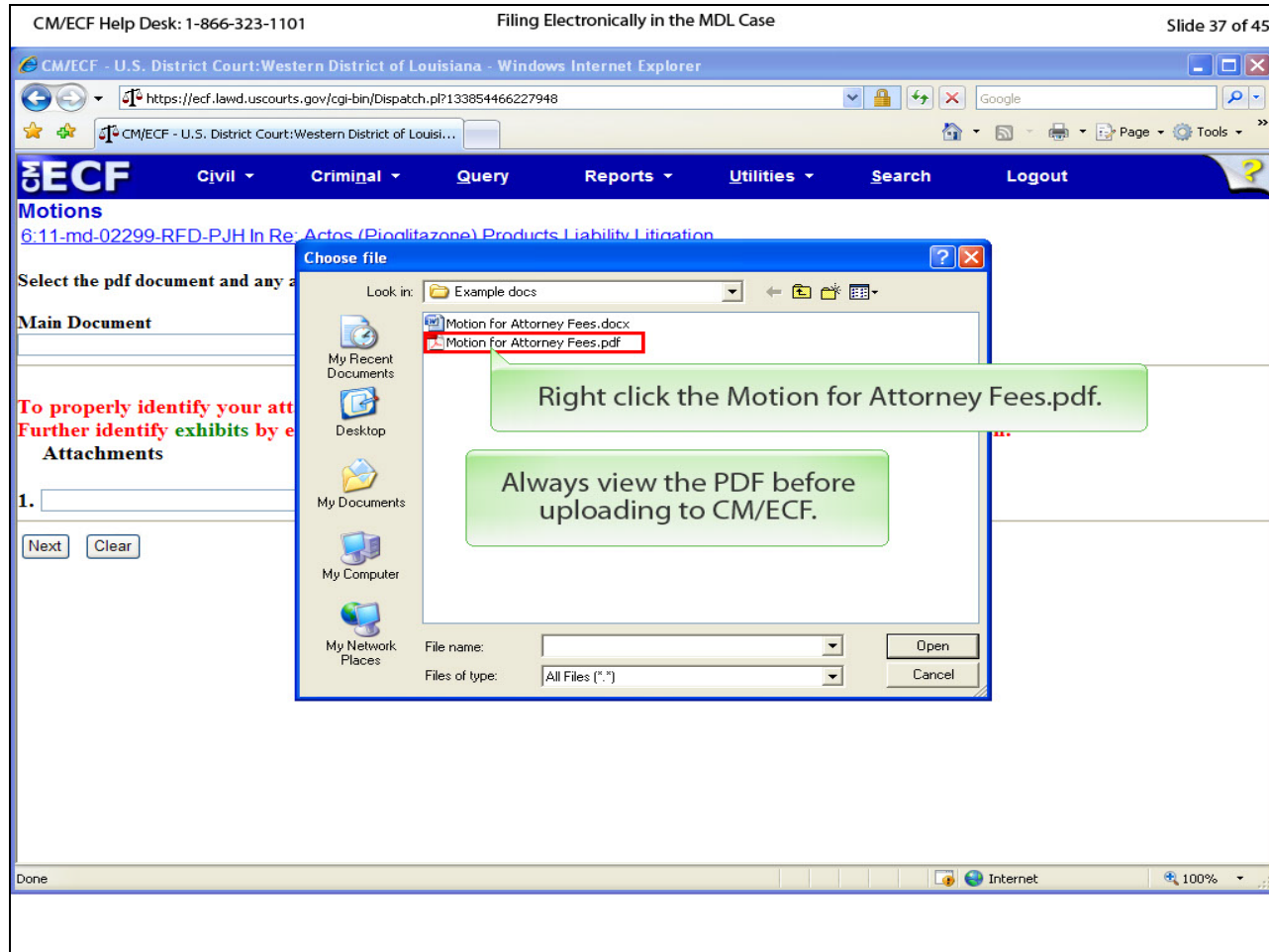
Attachments	Category	Description
1. <input type="text"/> <input type="button" value="Browse..."/>	<input type="text"/>	<input type="text"/>

Done Internet 100%

Slide notes

Now, we need to locate and upload the PDF document we wish to file. Click the Browse button for the main document.

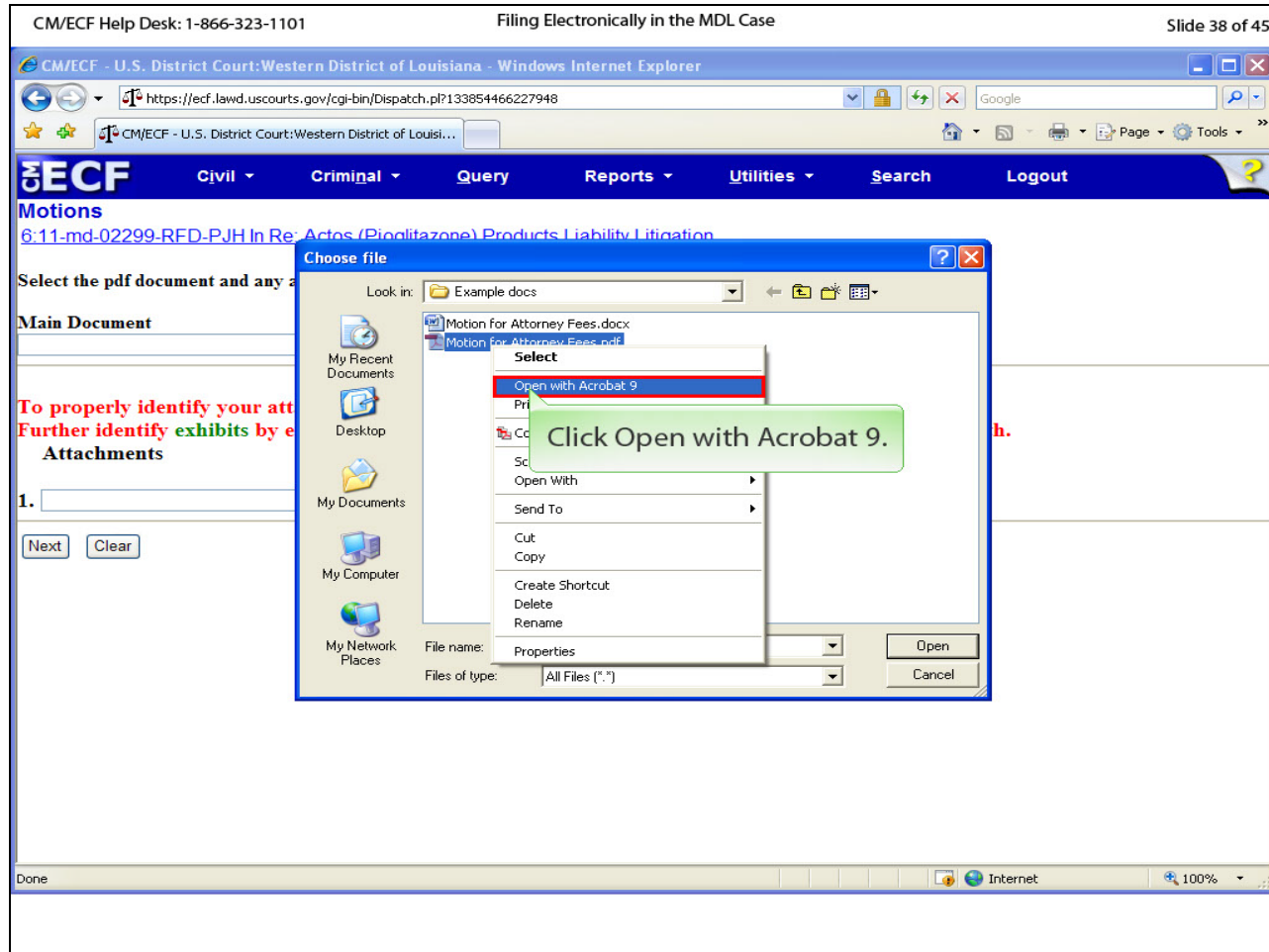
Slide 37 - Slide 37



Slide notes

Navigate to the folder which contains your PDF filing. Always view the PDF prior to uploading to CM/ECF. To view the document, right click the PDF.

Slide 38 - Slide 38



Slide notes

Click open with acrobat 9 or whatever program your computer uses to view PDFs.

Slide 39 - Slide 39

CM/ECF Help Desk: 1-866-323-1101 Filing Electronically in the MDL Case Slide 39 of 45

Motion for Attorney Fees.pdf - Adobe Acrobat

File Edit View Document Comments Forms Tools Advanced Window Help

Click close button.

Select the p
Main Docu
To proper
Further id
Attach
1.
Next Cl

UNITED STATES DISTRICT COURT
WESTERN DISTRICT OF LOUISIANA

In Re: Actos (Pioglitazone) Products *
Liability Litigation * 6:11-md-2299
*
* JUDGE DOHERTY
*
* MAGISTRATE JUDGE HANNA
*
This Document Applies to:
3:11-cv-1647 Young et al vs. Takeda et al *
3:11-cv-1751 Barth et al vs. Takeda et al *

MOTION FOR ATTORNEY FEES

[INSERT BODY OF MOTION]

Ensure correct PDF appears.

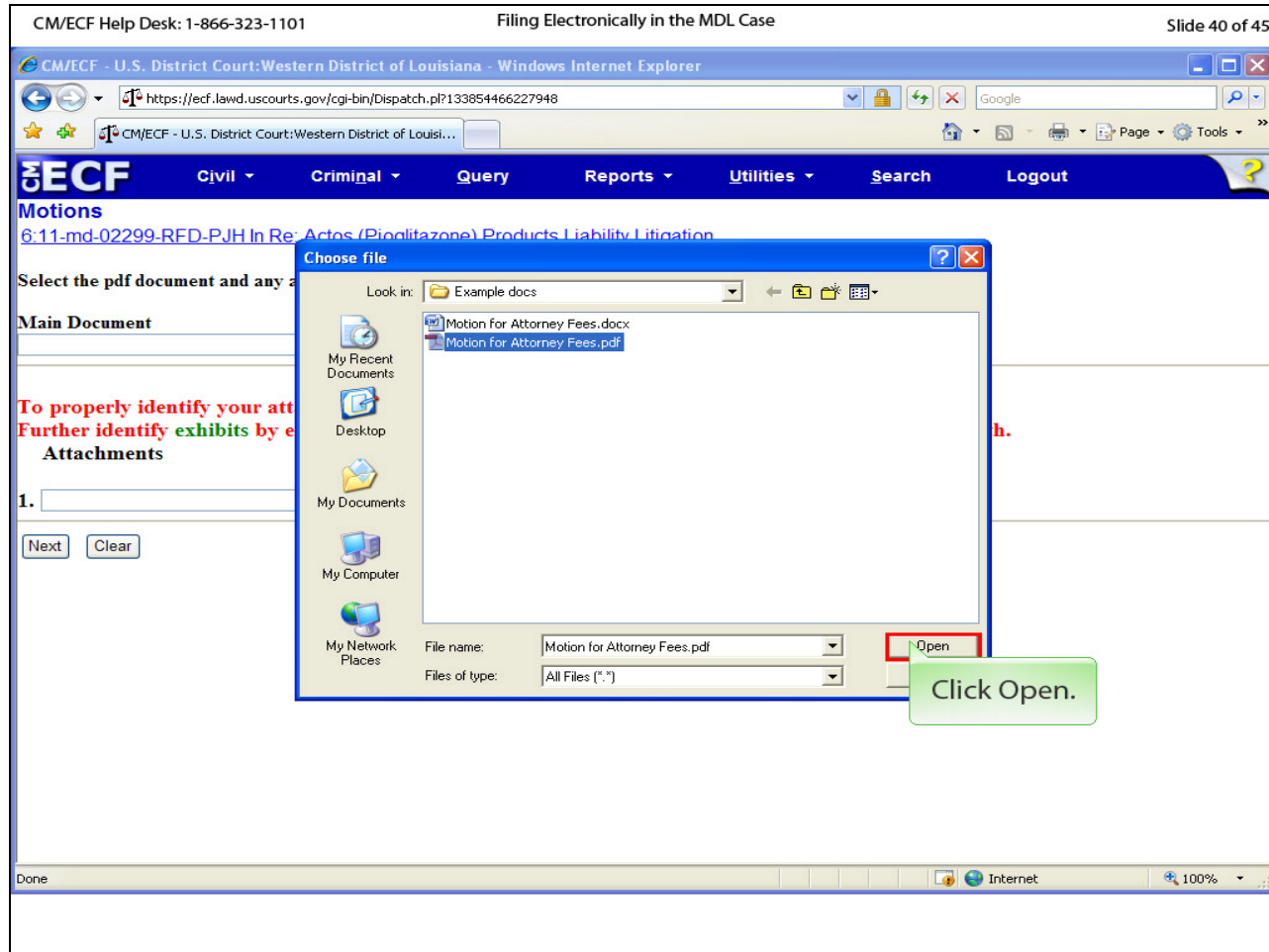
s/Attorney Name
Attorney Name
Law Firm Name
123 Main St Ste 456
Anywhere, USA 12345
(111)123-4567 (office)
(111)123-4568 (fax)

Done 100%

Slide notes

Ensure the correct PDF appears, and click the close button.

Slide 40 - Slide 40



Slide notes

Click the open button to insert the file path and file name into the Main Document field in CM/ECF.

Slide 41 - Slide 41

CM/ECF Help Desk: 1-866-323-1101 Filing Electronically in the MDL Case Slide 41 of 45

CM/ECF - U.S. District Court:Western District of Louisiana - Windows Internet Explorer

https://ecf.lawd.uscourts.gov/cgi-bin/Dispatch.pl?133854466227948

CM/ECF - U.S. District Court:Western District of Louisiana

ECF Civil Criminal Query Reports Utilities Search Logout

Motions

[6:11-md-02299-RFD-PJH In Re: Actos \(Pioglitazone\) Products Liability Litigation](#)

Select the pdf document and any attachments.

Main Document

C:\My Adobe Captivate Projects\MDL\Exs Browse...

To properly identify your attachment, select from the *Category* drop-down box.
Further identify exhibits by entering an accurate but brief *Description*, i.e., A-Deposition of John Smith.

Attachments	Category	Description
1. Browse...		

Next Clear

Click Next.

Done Internet 100%

Slide notes

If there are attachments to your motion, you would add them here. Since our example contains no attachments, we will click Next.

Slide 42 - Slide 42

CM/ECF Help Desk: 1-866-323-1101 Filing Electronically in the MDL Case Slide 42 of 45

CM/ECF - U.S. District Court:Western District of Louisiana - Windows Internet Explorer

https://ecf.lawd.uscourts.gov/cgi-bin/Dispatch.pl?763470337477353

CM/ECF - U.S. District Court:Western District of Louisiana

ECF Civil Criminal Query Reports Utilities Search Logout

Motions

[6:11-md-02299-RFD-PJH In Re: Actos \(Pioglitazone\) Products Liability Litigation](#)

A notice shall issue by the court setting this matter before the appropriate judicial officer. All counsel will be notified of the setting in due course.

Next Clear

Click Next.

Yellow boxes notify you of actions the Clerk's Office will take.

Done Internet 100%

Slide notes

Yellow boxes notify you of actions the Clerk's Office will take. Click Next.

Slide 43 - Slide 43

CM/ECF Help Desk: 1-866-323-1101 Filing Electronically in the MDL Case Slide 43 of 45

CM/ECF - U.S. District Court:Western District of Louisiana - Windows Internet Explorer

https://ecf.lawd.uscourts.gov/cgi-bin/Dispatch.pl?369804741689212

CM/ECF - U.S. District Court:Western District of Louisi...

ECF Civil Criminal Query Reports Utilities Search Logout

Motions

[6:11-md-02299-RFD-PJH In Re: Actos \(Pioglitazone\) Products Liability Litigation](#)

Docket Text: Modify as Appropriate.

Click Next.

Modify the docket text IF necessary.

Done Internet 100%

Slide notes

Make any appropriate edits to the docket text, and click Next.

Slide 44 - Slide 44

CM/ECF Help Desk: 1-866-323-1101 Filing Electronically in the MDL Case Slide 44 of 45

CM/ECF - U.S. District Court:Western District of Louisiana - Windows Internet Explorer

https://ecf.lawd.uscourts.gov/cgi-bin/Dispatch.pl?877526265648281

CM/ECF - U.S. District Court:Western District of Louisiana

ECF Civil Criminal Query Reports Utilities Search Logout

Motions

[6:11-md-02299-RFD-PJH In Re: Actos \(Pioglitazone\) Products Liability Litigation](#)

Docket Text: Final Text

MOTION for Attorney Fees by Alan Barth, Gay Barth, David E Young, Della Young, Alan Barth, Gay Barth, David E Young, Della Young. Motions referred to Patrick J Hanna. Associated Cases: 6:11-md-02299-RFD-PJH, 3:11-cv-01647-RFD-PJH, 3:11-cv-01751-RFD-PJH(aty,Whidden, C)

Attention!! Pressing the NEXT button on this screen commits this transaction. You will have no further opportunity to modify this transaction if you continue.

Have you redacted?

Verify docket text is correct.

Source Document Path (for confirmation only):
C:\My Adobe Captivate Projects\MDL\Example docs\Motion for Attorney Fees.pdf pages: 1

Next Clear

To submit your filing and receive a NEF, you will click Next.

Ensure the applicable cases and parties appear in the docket text.

If the filing involves more than five cases, the notation "6:11-md-02299-RFD-PJH et al" will appear instead of listing each case.

CONTINUE


Done Internet 100%

Slide notes

Verify the docket text correctly reflects the filing, and the applicable cases and parties. Please note that if the filing relates to more than five cases, the notation will simply read "6:11-md-2299-RFD-PJH et al" instead of listing each case. To submit your filing and receive a Notice of Electronic Filing or NEF, you would click Next. To proceed with this demonstration, click Continue.

Slide 45 - Slide 1

CM/ECF Help Desk: 1-866-323-1101	Filing Electronically in the MDL Case	Slide 45 of 45
----------------------------------	---------------------------------------	----------------



Thank you for viewing this demonstration.

We hope that you find it useful when electronically filing in the Multi-District Litigation case.

For further assistance, call our CM/ECF Help Desk during business hours at 866-323-1101.

Slide notes

This concludes our demonstration. Thank you for viewing, and we hope that you find the demonstration useful when filing electronically in the Multi-District Litigation case. For further assistance, call our CM/ECF Help Desk during business hours at 866-323-1101.